

ZOLL AED Plus®

Not all AEDs are created equal

IMAGE



[Dropbox link to Image](#)

MESSAGING

SMART. READY. TRUSTED.
Not all AEDs are created equal

The ZOLL AED Plus® was the first AED with Real CPR Help® to help rescuers know when they are performing high-quality CPR. Today, the ZOLL AED Plus® continues to set the benchmark for design, dependability, durability, and performance.

The ZOLL AED Plus® defibrillator supports you with:

- **Real CPR Help®** provides integrated, real-time feedback on CPR compression rate and depth
- **Long-life consumables** - 5-year battery and pad life means fewer replacements, a low cost of ownership, and an AED that's ready for the rescue
- **Designed to be durable**, the AED Plus can be used in various environments

ZOLL AED Plus® Semi-Automatic

PN: 20200000102011130

ZOLL AED Plus® Fully Automatic

PN: 22300700502011130

Inclusions

- LCD screen showing voice prompt messages with step by step directions
- 10 Type 123 Lithium Batteries. Five (5) year shelf-life (8000-0807-01)
- CPR-D padz® one piece electrode pad with Real CPR Help® (8900-0800-01). Five (5) year shelf-life.
- CPR-D accessory kit including CPR barrier mask, scissors, gloves, prep razor, towel and a moist towelette.
- Soft Carry Case
- Operator's Guide and Basic Life Support Poster
- Access to ZOLL Online Learning
- (7) Seven year limited warranty

ZOLL AED Plus®

Not all AEDs are created equal

CONSUMABLES



[Dropbox link to Image](#)

CPR-D-padz®

PN: 8900-0800-01

CPR-D-padz® one piece electrode pad with Real CPR Help®. Supplied with gloves, barrier mask, scissors, razor, wet wipe and dry wipe. Five (5) year shelflife.

This revolutionary one-piece adult electrode ensures fast and accurate placement, then senses and reports the depth and rate of the chest compressions to the ZOLL AED Plus®. With a five-year shelf life, the CPR-D-padz electrode has the longest shelf life of any disposable electrode.

pedi-padz® II

PN: 8900-0810-01

pedi-padz® II Paediatric Multi-Function Electrodes Designed for use with the AED Plus. The AED recognises when pedi-padz II are connected and automatically proceeds with a paediatric ECG analysis and adjusts energy to paediatric levels. Twenty four (24) month shelflife. One pair.



[Dropbox link to Image](#)

Type 123 Lithium Batteries

PN: 8000-0807-01

- Duracell Lithium 123A batteries for AED Plus
- 5 year life within the unit
- Sleeve of 10 batteries



[Dropbox link to Image](#)

OPTIONAL EXTRAS



[Dropbox link to Image](#)

Standard Wall Cabinet (depth: 9")

PN: 8000-0855

Visibility of your AED Plus is essential so that it is easy to find in an emergency situation. The 9" alarmed wall cabinet holds the ZOLL AED Plus in its carry case with an extra set of electrodes.

- Dimensions: 44.4 cm W x 44.4 cm H x 22.7 cm D
- Includes: alarm and setup instructions

ZOLL AED Plus®

Not all AEDs are created equal

OPTIONAL EXTRAS



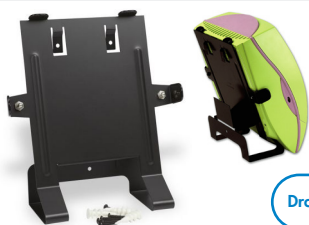
[Dropbox link to Image](#)

Standard Wall Cabinet (depth: 7")

PN: 8000-0817

Visibility of your AED Plus is essential so that it is easy to find in an emergency situation. The 7" alarmed wall cabinet holds the ZOLL AED Plus (on a bracket without the carry case) and one spare set of electrodes.

- Dimensions: 44.1 cm W x 44.1 cm H x 22.6 cm D
- Includes: alarm and setup instructions



[Dropbox link to Image](#)

Mounting bracket (use to mount unit on the wall)

PN: 8000-0809-01

- Mounting bracket (use to mount the ZOLL AED Plus on a wall without the carry case.)



[Dropbox link to Image](#)

Universal AED Wall Bracket (made by heart station)

PN: ZAU-BRACKET

Houses both unit and bag

- Mounting bracket (use to mount the ZOLL AED Plus on a wall without the carry case.)



[Dropbox link to Image](#)

Clear AED Plus Wall Cabinet

PN: 8000-0856

- Dimensions: 30.9 cm W x 56.6 cm H x 16.3 cm D
- Clear AED Plus Wall Cabinet



[Dropbox link to Image](#)

ILCOR Flush Wall Sign (AED)

PN: 8000-001260

- ILCOR Flush Wall Sign (AED)



[Dropbox link to Image](#)

ILCOR 3D Wall Sign (AED)

PN: 8000-001261

- ILCOR 3D Wall Sign (AED)

ZOLL AED Plus® Trainer2

Not all AEDs are created equal

IMAGE



[Dropbox link to Image](#)

MESSAGING

Not all AEDs are created equal

Complete Simulation Control at the Instructor's Fingertips

The ZOLL AED Plus® Trainer2 allows CPR and first aid instructors to have students experience what it's like to save a life with the AED Plus. Choose from four different fixed rescue scenarios or have complete manual control of the entire rescue. A wireless remote lets you control multiple AED Plus Trainer2s.

ZOLL AED Plus® Semi Automatic Trainer2

PN: 8008-0050-05

ZOLL AED Plus® Fully Automatic Trainer2

PN: 8008-000052-05

Inclusions

- Trainer Wireless Remote (1 ea 8008-0007)
- CPR-D padz Training Electrodes (1 pr 8900-0804-0)
- Batteries (2-AA size and 4-D size)
- Trainer 2 Operator's Manual
- 12 months factory warranty

CONSUMABLES



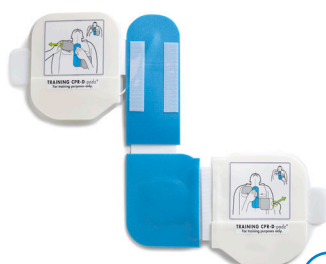
[Dropbox link to Image](#)

CPR-D-padz Training Electrodes

PN: 8900-0804-01

CPR-D-padz Training Electrodes with reusable "Z-design" electrode with CPR hand placement indicator and one (1) pair of disposable adhesive gels.

Note: The disposable gels must be applied to the reusable pad before use



[Dropbox link to Image](#)

Replacement Adhesive gels

for CPR-D padz Training Electrode

PN: 8900-0803-01

- 5 pairs per case

ZOLL AED Plus® Trainer2

Not all AEDs are created equal

CONSUMABLES



[Dropbox link to Image](#)

pedi-padz II Training Electrodes

PN: 8900-000861-01

- 6 pairs per case



[Dropbox link to Image](#)

Replacement Trainer2

Wireless Remote Controller

PN: 8008-0007

- with 2AA batteries



[Dropbox link to Image](#)

ZOLL AED Plus® Trainer Carry Case

PN: 8000-0375-01



[Dropbox link to Image](#)

NEW* ZOLL AED Rescue Pack

PN: 8000-001468-01

Backpack Features:

- Main compartment features three removable stick-in-place pouches
- Internal Velcro lining strips to secure modules or other Velcro compatible items
- Side pockets for easy access to vital sign tools, badges, and smaller equipment
- Durable and cleanable Tarpaulin fabric, with an ounce urethane coating, for easier cleaning and protection
- A stow-away "Rain fly" is included for bad weather

ZOLL AED Plus®

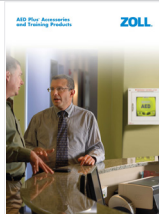
Not all AEDs are created equal

LITERATURE & PRODUCT MANUALS



AED PLUS BROCHURE

[Dropbox link to Image](#)



AED PLUS ACCESSORIES AND TRAINING PRODUCTS

[Dropbox link to Image](#)



AED PLUS TECHNICAL SPEC SHEET

[Dropbox link to Image](#)



FULLY AUTOMATIC AED PLUS TECHNICAL SPEC SHEET

[Dropbox link to Image](#)



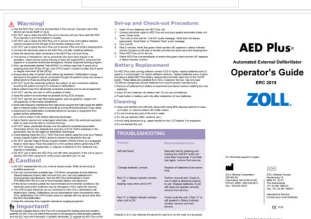
AED PLUS ADMINISTRATOR'S GUIDE

[Dropbox link to Image](#)



FULLY AUTOMATIC AED PLUS ADMINISTRATOR'S GUIDE

[Dropbox link to Image](#)



AED PLUS OPERATOR'S GUIDE

[Dropbox link to Image](#)

ZOLL AED Plus®

Not all AEDs are created equal

VIDEO & WEBSITE LINKS



BUSINESS PARTNER RESOURCE PORTAL

Our new hub access product literature, sales tools, images and videos to help you sell our AEDs. We are continuously adding new tools and resources to help you succeed, so be sure to look out for your login details with this email and visit the portal frequently.

PORTAL access: portal.zoll.com/ps-apac/

Username: Use your work email address or sign up

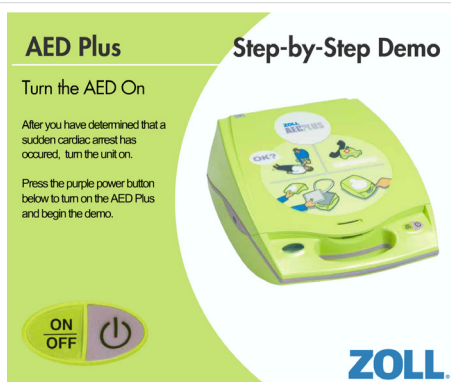
Password: realcprhelp



ZOLL AED Plus Promotional Video

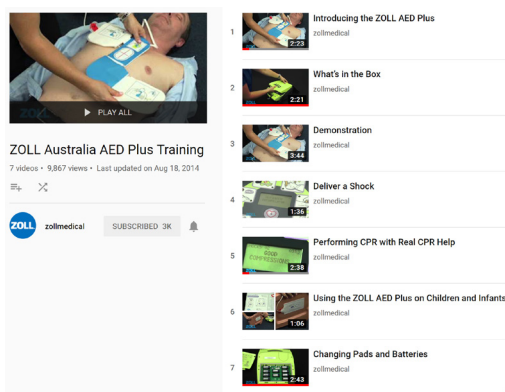
- Promotional Video – ZOLL AED Plus features and benefits.
- See why not all AEDs are created equal

Please visit: info.zoll.com/aed-plus



ZOLL AED Plus Step-by-Step Demo

Please visit: bit.ly/2uUGISE



Watch the ZOLL AED Plus Training Videos:

- Introducing the ZOLL AED Plus
- What's In the Box
- Demonstration
- Deliver a Shock
- Performing CPR with Real CPR Help
- Using the ZOLL AED Plus on Children & Infants
- Changing Pads and Batteries

Please visit: bit.ly/2YWU3rt

More Information

To learn more about The ZOLL AED Plus®, please contact your local representative or visit ZOLL online at bit.ly/2uSz9vx

ZOLL[®]